

The project would be a lower impact visually than Residential and Commercial uses that the property is zoned for. Below are some examples of what the project would look like from key observation points (KOP). Note that landscaping is not depicted in these renderings. In addition, views of Longs Peak and the Front Range mountain backdrop would be preserved above the photovoltaic solar panels. The panel's low profile of 8 to 12 feet in height further reduces their visibility from neighboring properties and public rights-of-way, as compared to new single-family or commercial buildings that are allowed by the current zoning.



1- Potential Screening of the Collector Substation with Ornamental Metal Fence and two layers of evergreen trees



2- Potential Screening with Block Wall, which could replace the Ornamental Metal Fence to match the Longs Peak Substation seen at left.



3- Solar Arrays Looking Southwest from C.R. 5 & C.R. 34 ³/₄.

*Note that screening is not shown on this exhibit and the visualizations below to show the maximum visual impact. Screening in accordance with city standards would be provided along all public rights-of-way.



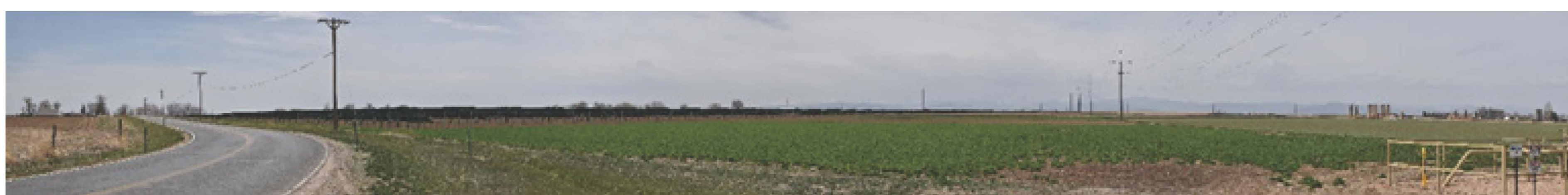
4- Solar Arrays Looking Northwest from C.R. 34 & C.R. 5.



5- Solar Arrays as Looking East from Town of Mead Reservoir.



6- Energy Storage as Looking West from Future Trail. *



7A- Solar Arrays as Looking Southwest from C.R. 5.



7B- Residential uses would obstruct views of Longs Peak and the Mountain Backdrop more than solar, and create more disturbance to wildlife and agricultural activities. Compare this residential simulation to Figure 7A above.